



Northland Pioneer College

EXPANDING MINDS • TRANSFORMING LIVESSM

2020 MASTER PLAN UPDATE

White Mountain Campus Master Plan - Show Low - June 3, 2020

NORTHLAND PIONEER COLLEGE MASTER PLAN UPDATE

03	Executive Summary
04 - 05	Northland Pioneer College History + Context
06 - 14	Principles and Process
15 - 29	Part #1 - White Mountain Campus - Show Low: Master Plan Update
30	Part #2 - Renovations to Northland Pioneer Campuses and Centers
31 - 36	Little Colorado Campus Plan - Winslow
37 - 40	Silver Creek Campus Plan - Snowflake/ Taylor
41 - 44	Painted Desert Campus Plan - Holbrook
45 - 47	Whiteriver Center Plan - Whiteriver
48 - 49	Hopi Center Plan - Polacca
Appendix	Meeting Minutes Attendance Lists

EXECUTIVE SUMMARY

The purpose of the master plan update is to define current and future facility needs for the college. Future expansion and renovation efforts will allow NPC to meet growing needs in the areas of academic institution, professional growth, worker training and technical skill development.

The master plan update is divided into two main sections:

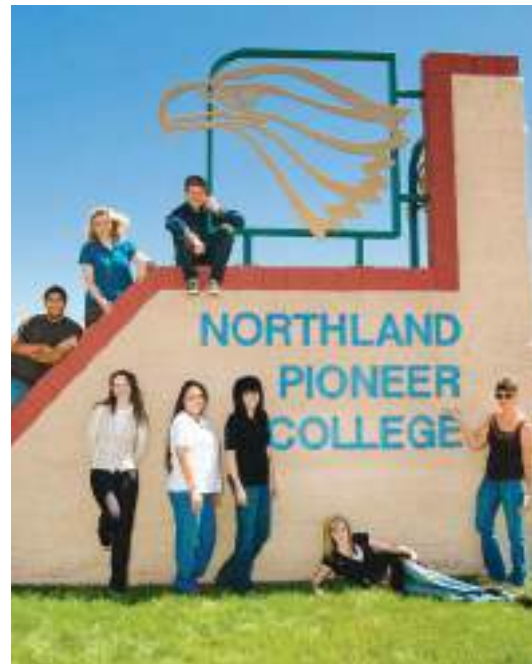
The first section focuses on the White Mountain Campus in Show Low. This section provides a road map for the current and future planning efforts on the campus.

The second section focuses on the other campuses and centers in the Northland Pioneer family.

Northland Pioneer College's vision is to provide a learner-centered environment, respond to community needs through effective and innovative services for their students, and foster professional growth and collegial collaboration.



NORTHLAND PIONEER COLLEGE HISTORY + CONTEXT



Northland Pioneer College (NPC) is a regionally accredited, publicly supported, comprehensive community college serving Navajo County, Arizona. Campuses are located in four of the largest Navajo County communities: Holbrook, Show Low, Snowflake/Taylor and Winslow. Instructional centers are located in Hopi/Polacca, Kayenta and Whiteriver.

NPC also partners with community members in Apache County, Arizona, with instructional centers in Springerville/Eagar and St. Johns. NPC is governed by the Navajo County Community College District, the nation's second-largest community college service area – 21,158 square miles (54,800 km²). The Navajo, Hopi and White Mountain Apache Indian Reservations occupy more than 60 percent of the total land in the college's service area. NPC has an open admissions policy.

History

In the late 1950s, citizens in Northeastern Arizona were concerned about the lack of access to higher education and began advocating for the establishment of a regional community college. In fall 1972, the Navajo County Community College District was formed to serve the higher education needs of residents in a region covering the approximate size of West Virginia.

The district oversees Northland Pioneer College, which began offering college classes in fall 1974. More than 2,000 students enrolled that first year, double the anticipated number. Classes were held in an abandoned school, an abandoned hospital and a variety of public school classrooms and community buildings. The first graduating class, in spring 1975, included nine students.

From those humble beginnings, NPC now serves more than 7,000 students annually, using technology to connect its own nine locations plus delivering college-level courses to rural high school students throughout its service area. (<https://www.npc.edu/northland-pioneer-college/our-history>)

2020 MASTER PLAN UPDATE

PRINCIPLES AND PROCESS

CONTEXT

In the fall of 2019, SPS+ Architects was given the opportunity to update the 2012 Northland Pioneer College Facilities Master Plan. The campuses include: White Mountain Campus (Show Low, Arizona), Little Colorado Campus (Winslow, Arizona), Painted Desert Campus (Holbrook, Arizona), Silver Creek Campus (Snowflake/Taylor), Hopi Center, Springerville-Eagar Center, and Whiteriver Center.



Meeting with Dean and Department Heads

PROCESS

Over the course of multiple meetings with Deans, Department heads, faculty and staff, SPS+ was able to collect the campuses existing building uses, and impressions of future wants and needs.

NOTE! Kayenta center location is tentative and not included in this document

SPS+ Architects

Gathering Information and Introductory Campus Visits

Meeting with Dean and Department Heads

Programming Different Departments, Faculty+Staff

Visiting all Campuses and Centers

Northland Pioneer College
White Mountain Campus- Show Low |
October, 2019

Northland Pioneer College
White Mountain Campus- Show Low |
November 5-6, 2019

Northland Pioneer College
White Mountain Campus- Show Low |
November 20-21, 2019

Painted Desert Campus |
December 17, 2019
Silver Creek Campus |
December 18, 2019
Whiteriver Center |
December 18, 2019
Little Colorado Campus |
December 19, 2019
Hopi Center |
January 29, 2020



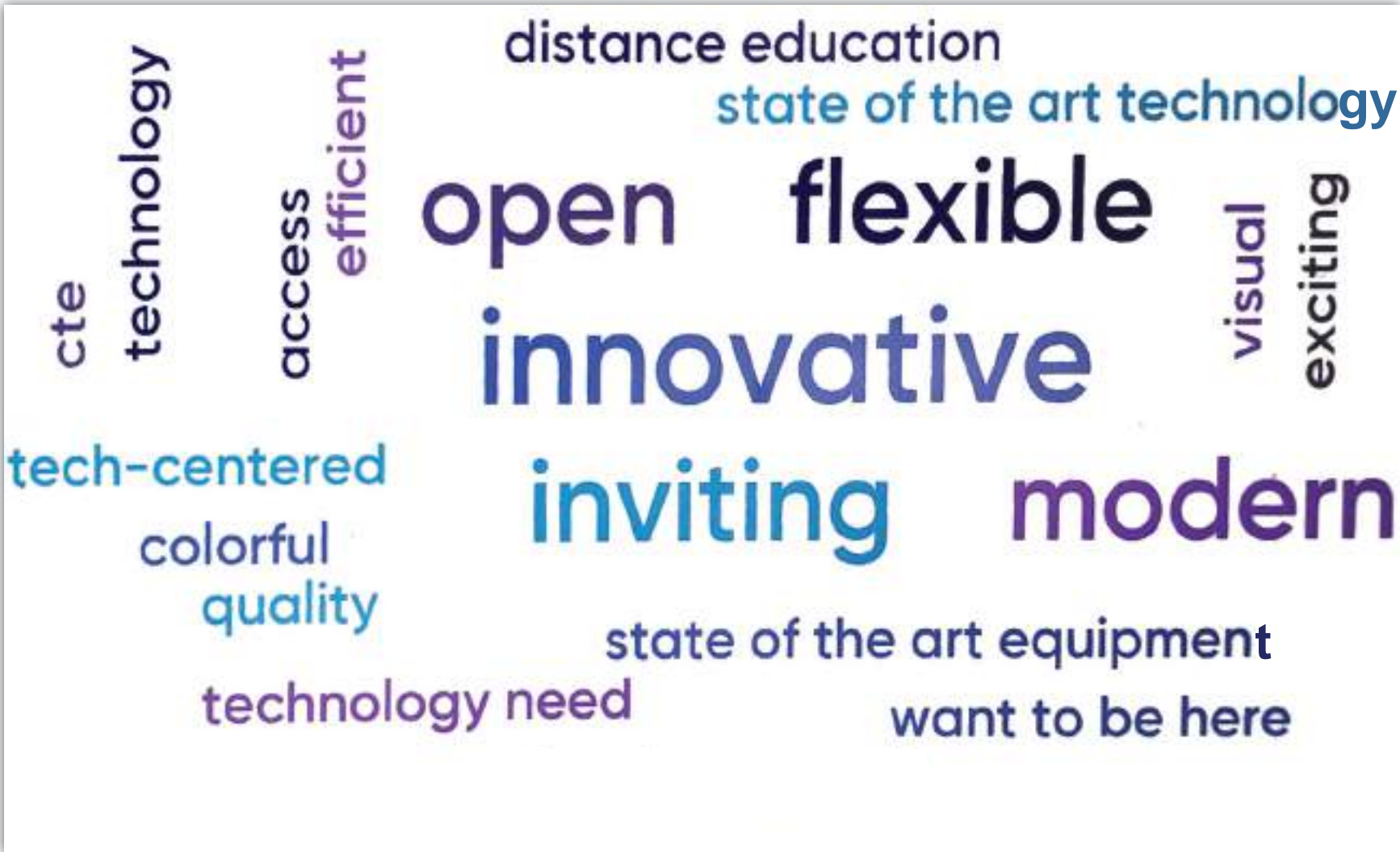
Programming Meeting

OBJECTIVES

By interviewing campus leadership and district leadership, overall objectives emerged:

- Support recruitment and retention of students, faculty, staff;
- Develop a long term road map to guide immediate decisions;
- Integrate academics and student life;
- Accommodate enrollment growth;
- Create campus and community connections;
- Apply sustainability principles.

**WORD CLOUD: LEARNING, ENVIRONMENT INFLUENCES
AND DESIGN VISION THEMES**



Using a real-time phone app survey at the programming meeting campus deans and department heads anonymously identified their priorities and goals for the vision and direction of the Show Low campus. The larger words illustrate the most popular goals among attendees. These Design goals included: open, flexible, innovative, inviting and modern, becoming the conceptual foundation of the design direction.



2020 MASTER PLAN UPDATE PRINCIPLES

IN ORDER TO MEET NPC'S MASTER PLAN OBJECTIVES, FIVE MAIN GUIDING PRINCIPLES SHOULD BE APPLIED TO ALL OF THE CAMPUSES:

- PRINCIPLE ONE: **UPDATE TECHNOLOGY ON ALL CAMPUSES**
- PRINCIPLE TWO: **CONSOLIDATE ACADEMIC PROGRAMS IN THE SAME BUILDING TO INCREASE EFFICIENCY AND MAXIMIZE PROGRAM FACILITIES**
- PRINCIPLE THREE: **REINFORCE SENSE OF PLACE**
- PRINCIPLE FOUR: **FOSTER COMMUNITY OUTREACH**
- PRINCIPLE FIVE: **DEVELOP STUDENT CAMPUS LIFE**

PRINCIPLE ONE

UPDATE TECHNOLOGY ON ALL CAMPUSES



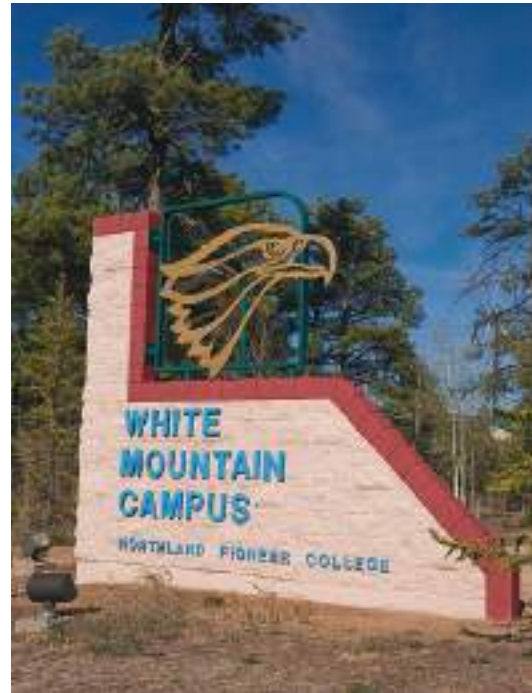
One of Northland Pioneer's goals is to be able to provide long distance learning to people in rural communities within Northern Arizona which supports President Vest's vision to make sure that everyone has equal access to receive an education. To support this goal all technology on campus, especially all classrooms, will be upgraded. This will allow for better connections between campuses and between teachers and students. In addition, universal charging stations and touch down center will be provided on all campuses to make it easier for students to charge their laptops, tablets, and phones. The hope is that by providing these upgrades students will stay on campus longer which will promote more collaboration.

Opportunities:

- Universal connectivity
- High speed Internet access

PRINCIPLE TWO

CONSOLIDATE ACADEMIC PROGRAMS IN THE SAME BUILDING TO INCREASE EFFICIENCY AND MAXIMIZE PROGRAM FACILITIES



By purposefully relocating programs and departments, NPC will be able to serve the student body in a more efficient manner. In its current state, the Show Low campus has overlapping uses within each building. This could cause confusion and new students could be intimidated by the additional hurdles associated with the on-boarding process.

Reorganizing the uses of the existing spaces and consolidating others will help establish clear wayfinding and pedestrian/vehicular circulation.

Opportunities:

- Consolidate programs
- Create clear vehicular/pedestrian circulation
- Create a "front door" to the campus
- Provide clear and consistent signage throughout the campus

PRINCIPLE THREE

REINFORCE SENSE OF PLACE



Georgia Tech West Village Commons

In order to achieve maximum interaction between students, it is NPC's goal to encourage students to spend longer periods of time on campus. A General Education and Student Success Center can serve as a Campus Life hub. An open, flexible, and innovative facility would help support this approach. Inviting exterior amenities would further enhance that notion.

There are many ways to enhance a student's sense of place. It would be beneficial to provide a variety of spaces that range from secluded and quiet to high activity areas where privacy is not of concern. Additional options can be seating for small groups, large groups, and individuals. Additionally, all of the hallways, exterior walkways, plazas, etc can be an opportunity for chance encounters where students can interact and have an interchange of information and ideas.

Opportunities:

- Integrate the facilities with the Natural Setting.
 - Buildings can maximize views of the surrounding Ponderosa forests and existing pine trees within the campus.
 - Place buildings with the existing topography
- Develop Outdoor seating areas adjacent to the natural surroundings
- Informative/historic plaques
- Outdoor spaces
- Events
- Local artwork displays
- Expand learning capabilities

PRINCIPLE FOUR

FOSTER COMMUNITY OUTREACH



Campus life and a Sense of Place can be bolstered by Fostering Community Outreach. NPC was established due to the lack of higher education in the region; as a result, it serves a large role in nurturing the educational aspirations of future generations. By providing welcoming public spaces and holding community events on campus, more members of the surrounding communities will be able to experience, first-hand, the higher education environment.

By attracting community events onto the Campus, it will help inspire students to broaden their horizons and engage the surrounding community and raise awareness of any pressing issues. This will help NPC and the surrounding community cultivate a positive relationship and will help propel both entities forward.



Architecturally speaking, outdoor public spaces can be integrated into the building designs and flexible interior spaces can be provided in order to maximize the number of functions that can be accommodated.

Opportunities:

- Involvement
- Connectivity
- Integration

PRINCIPLE FIVE

DEVELOP STUDENT CAMPUS LIFE



Having a strong student campus life is very important to creating a successful educational environment where students can thrive and achieve their goals. Some of the ways this is being achieved is by providing a variety of spaces on campus for students to study. By doing so this will encourage students to spend more time on campus which will result in more collaboration and idea exchanging. The placement of the new General Education/ Student Success Center is also in support of this goal to create a better student campus life by creating a new heart in the center of campus where students will have the opportunity to interact more.



Opportunities:

- Create informative kiosks throughout campus
- Create social hubs throughout campus
- Hold workshops and lectures in public spaces
- Develop a variety of collaboration spaces

PART #1

WHITE MOUNTAIN CAMPUS - SHOW LOW

Northland Pioneer College
White Mountain Campus - Show Low - Existing



2012 MASTER PLAN

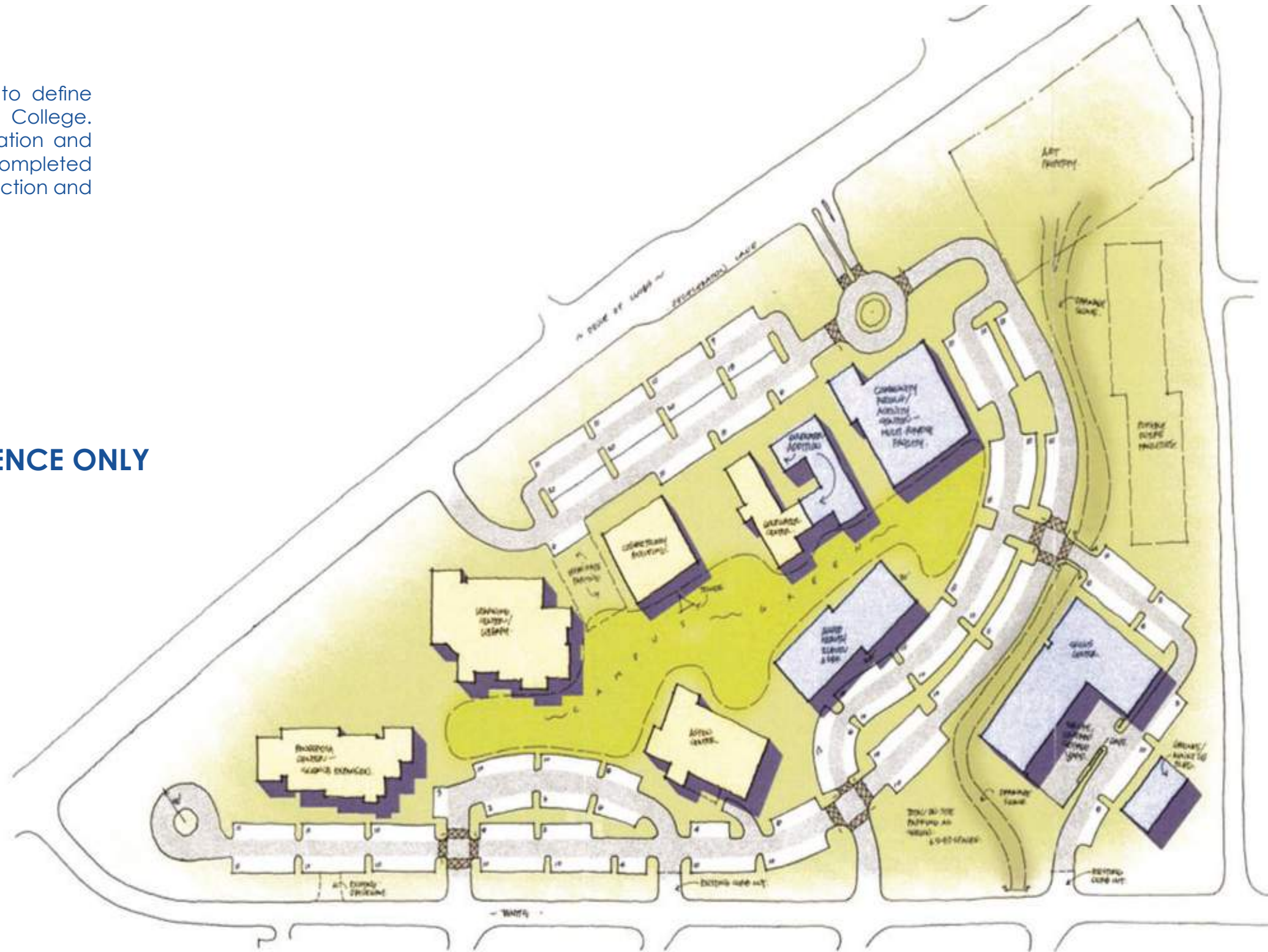
Northland Pioneer College

White Mountain Campus - Show Low

2012 Master Plan

The purpose of the 2012 master plan was to define current and future facility needs for the College. Review of the 2012 master plan implementation and assessment efforts found that everything was completed except for the proposed new building construction and ongoing maintenance at all sites.

FOR REFERENCE ONLY

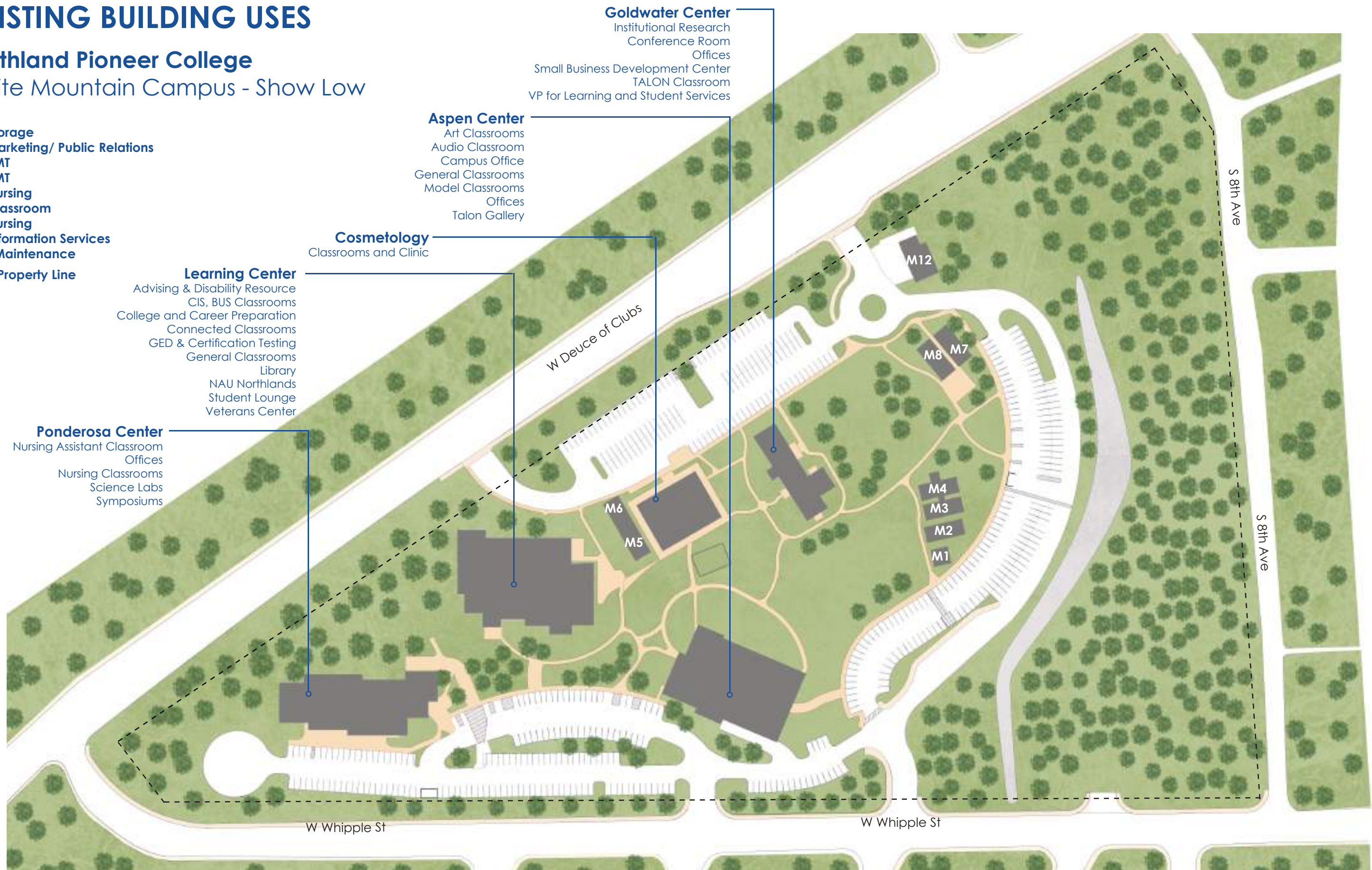


EXISTING BUILDING USES

Northland Pioneer College White Mountain Campus - Show Low

- M1: Storage
- M2: Marketing/ Public Relations
- M3: EMT
- M4: EMT
- M5: Nursing
- M6: Classroom
- M7: Nursing
- M8: Information Services
- M12: Maintenance

----- Property Line



Goldwater Center
 Institutional Research
 Conference Room
 Offices
 Small Business Development Center
 TALON Classroom
 VP for Learning and Student Services

Aspen Center
 Art Classrooms
 Audio Classroom
 Campus Office
 General Classrooms
 Model Classrooms
 Offices
 Talon Gallery

Cosmetology
 Classrooms and Clinic

Learning Center
 Advising & Disability Resource
 CIS, BUS Classrooms
 College and Career Preparation
 Connected Classrooms
 GED & Certification Testing
 General Classrooms
 Library
 NAU Northlands
 Student Lounge
 Veterans Center

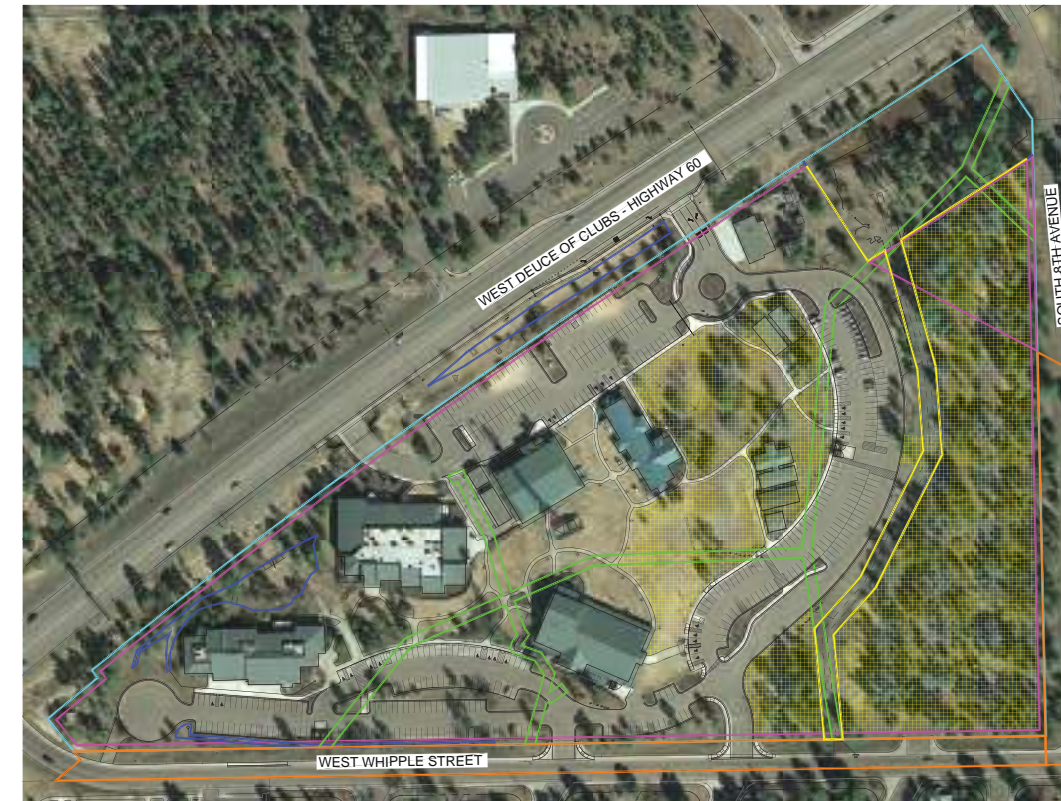
Ponderosa Center
 Nursing Assistant Classroom
 Offices
 Nursing Classrooms
 Science Labs
 Symposiums

Northland Pioneer College

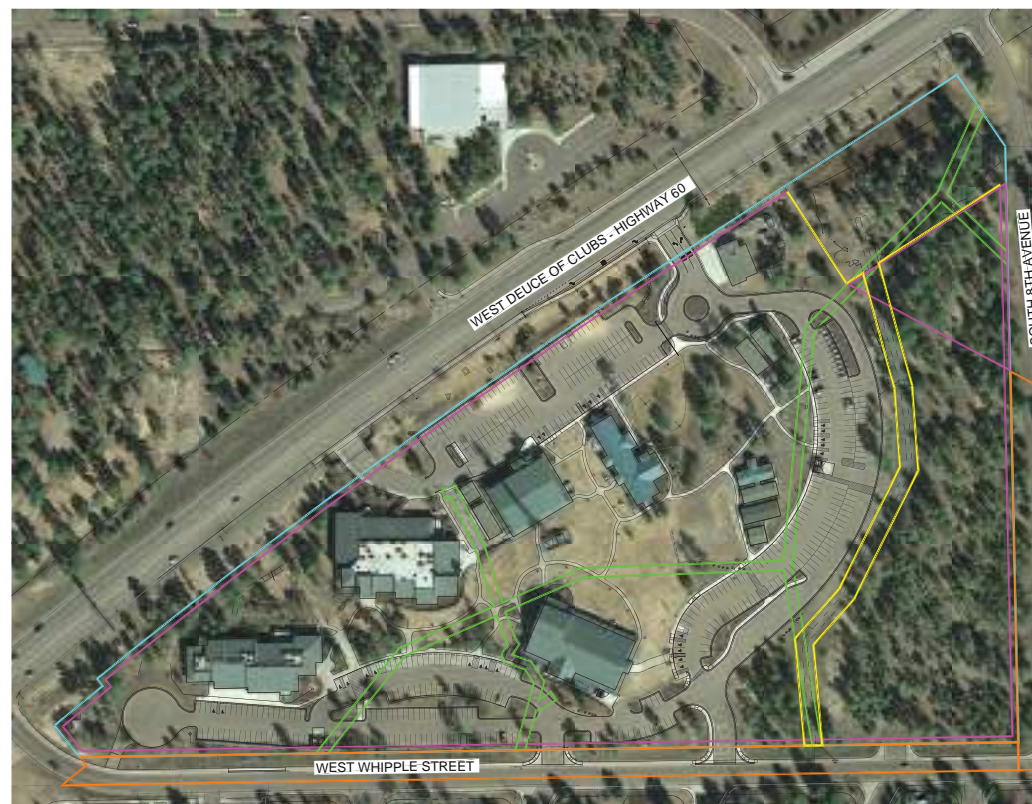
White Mountain Campus - Show Low - Existing Utilities Maps



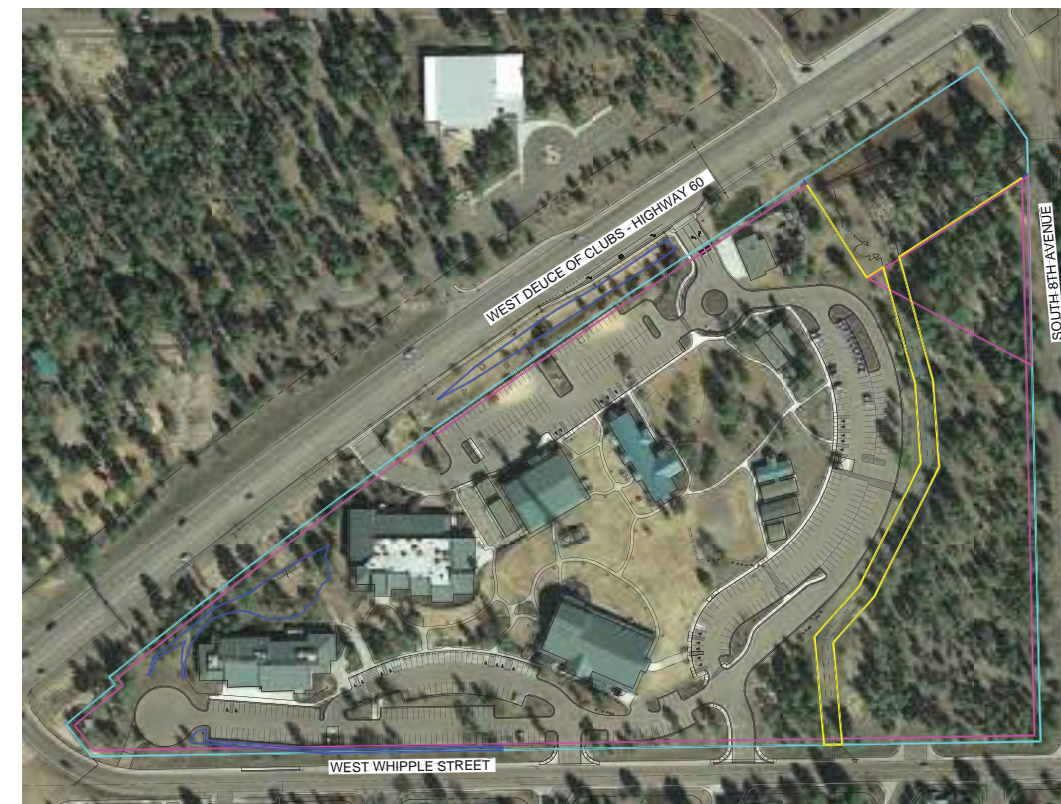
Boundary Map



Buildable Map



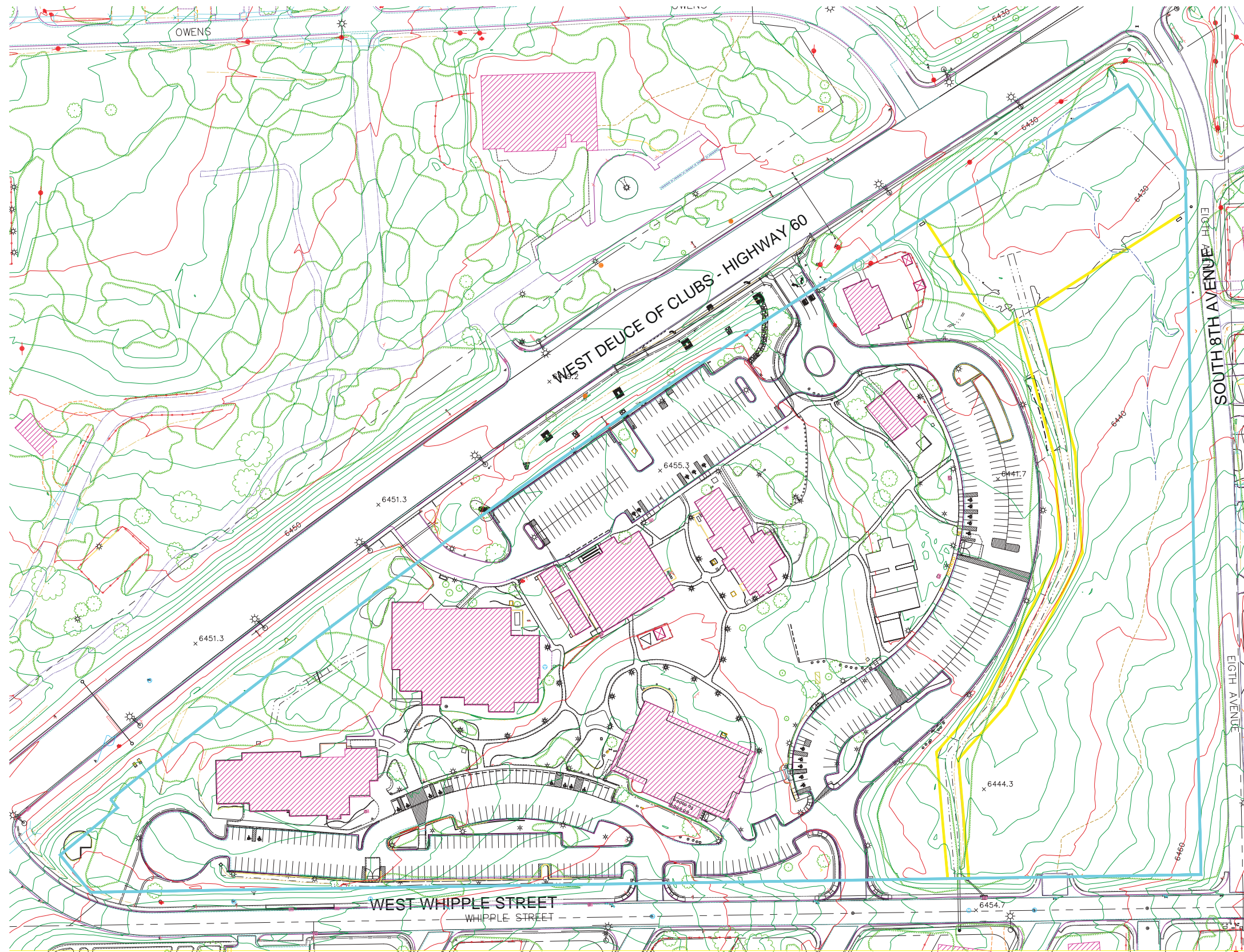
Easement Map



Drainage Map

Northland Pioneer College

White Mountain Campus - Show Low - Topography



EXISTING PEDESTRIAN AND VEHICULAR CIRCULATION

Northland Pioneer College

White Mountain Campus - Show Low

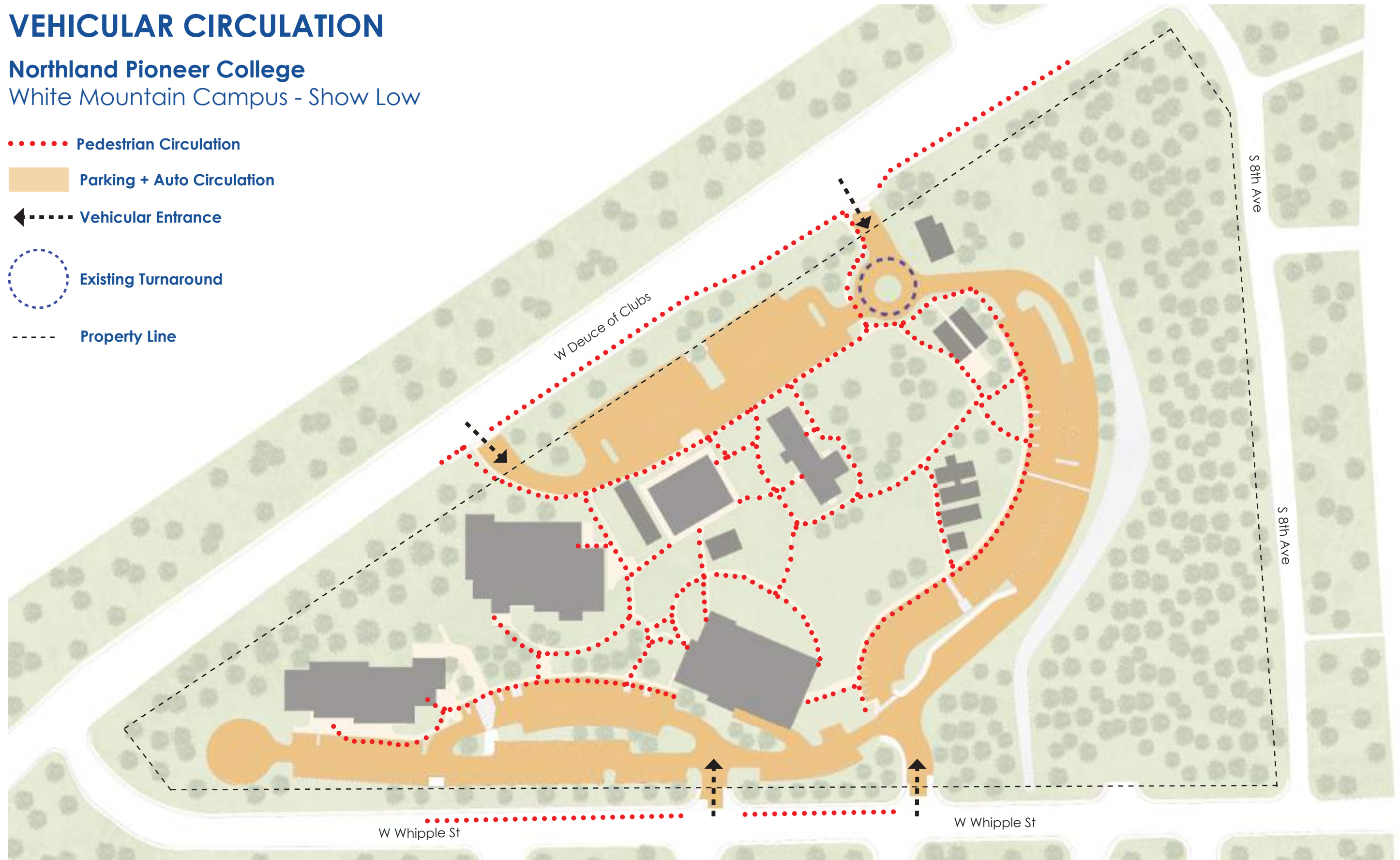
..... Pedestrian Circulation

■ Parking + Auto Circulation

← - - - - Vehicular Entrance

○ Existing Turnaround

- - - - Property Line





SPS+ ARCHITECTS RECOMMENDATIONS

- Build a new skills center - automotive, welding, metal arts, facilities building, and future program to be determined
- Build a new centrally located general education/student success building
- Renovate existing buildings and consolidate departments into same building to maximize efficiency
 - Allied Health (Former Learning Center)
 - Goldwater Welcome Center
 - Aspen Arts Center
 - Ponderosa Science Center (Future renovation)
- Connect new + existing campus buildings with ADA accessible sidewalks
- Create 'one stop shop' for student services (Goldwater Welcome Center)
- Develop new wayfinding signage at all campus locations
- Develop campus as community beacon
- Create a variety of gathering spaces
- Bring food/beverage services to campus
- Develop potential childcare
- Develop student social and learning spaces
- Upgrade technology in all of the classrooms and in the talon classrooms as well
- Enhance technology of modern library

RELOCATE PORTABLES/CONSOLIDATE PROGRAM INTO SAME BUILDING

Northland Pioneer College

White Mountain Campus - Show Low

- M1: Storage
- M2: Marketing/ Public Relations
- M3: EMT
- M4: EMT
- M5: Nursing
- M6: Classroom
- M7: Nursing
- M8: Information Services
- M12: Maintenance

- Existing Building
- Renovated Building
- Future New Building
- Property Line



RENOVATED BUILDINGS / MAXIMIZE PROGRAM EFFICIENCY

Northland Pioneer College White Mountain Campus - Show Low

The goal of these strategic renovations and relocations is to maximize program efficiency by consolidating programs into the same building.

Goldwater Building becomes the Welcome Center providing a front door to the White Mountain Campus. Another example would be transforming the existing Learning Center into the Allied Health.

----- Property Line

Ponderosa Science Center
Future Renovation
Faculty Offices
Science Labs

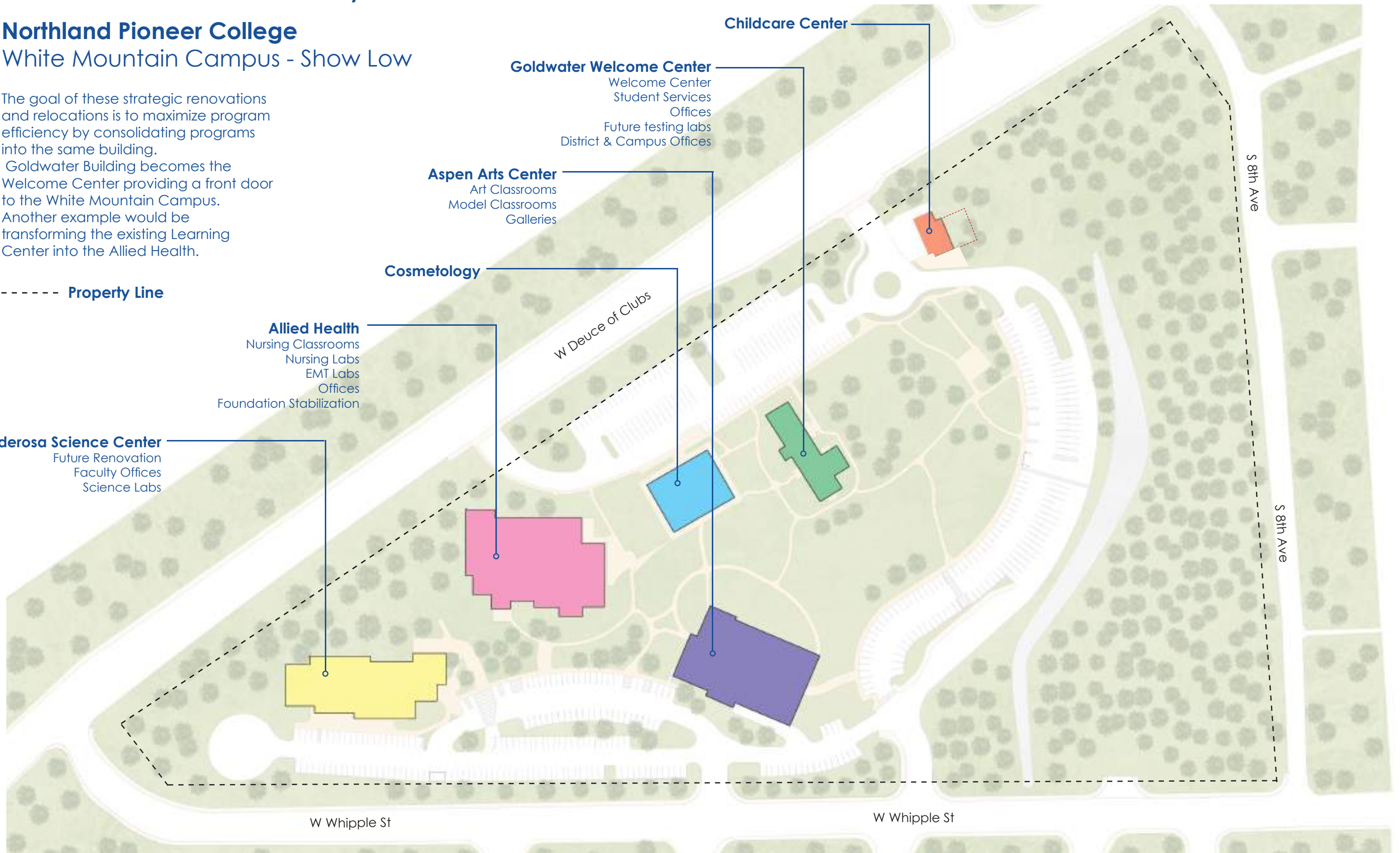
Allied Health
Nursing Classrooms
Nursing Labs
EMT Labs
Offices
Foundation Stabilization

Cosmetology

Aspen Arts Center
Art Classrooms
Model Classrooms
Galleries

Goldwater Welcome Center
Welcome Center
Student Services
Offices
Future testing labs
District & Campus Offices

Childcare Center








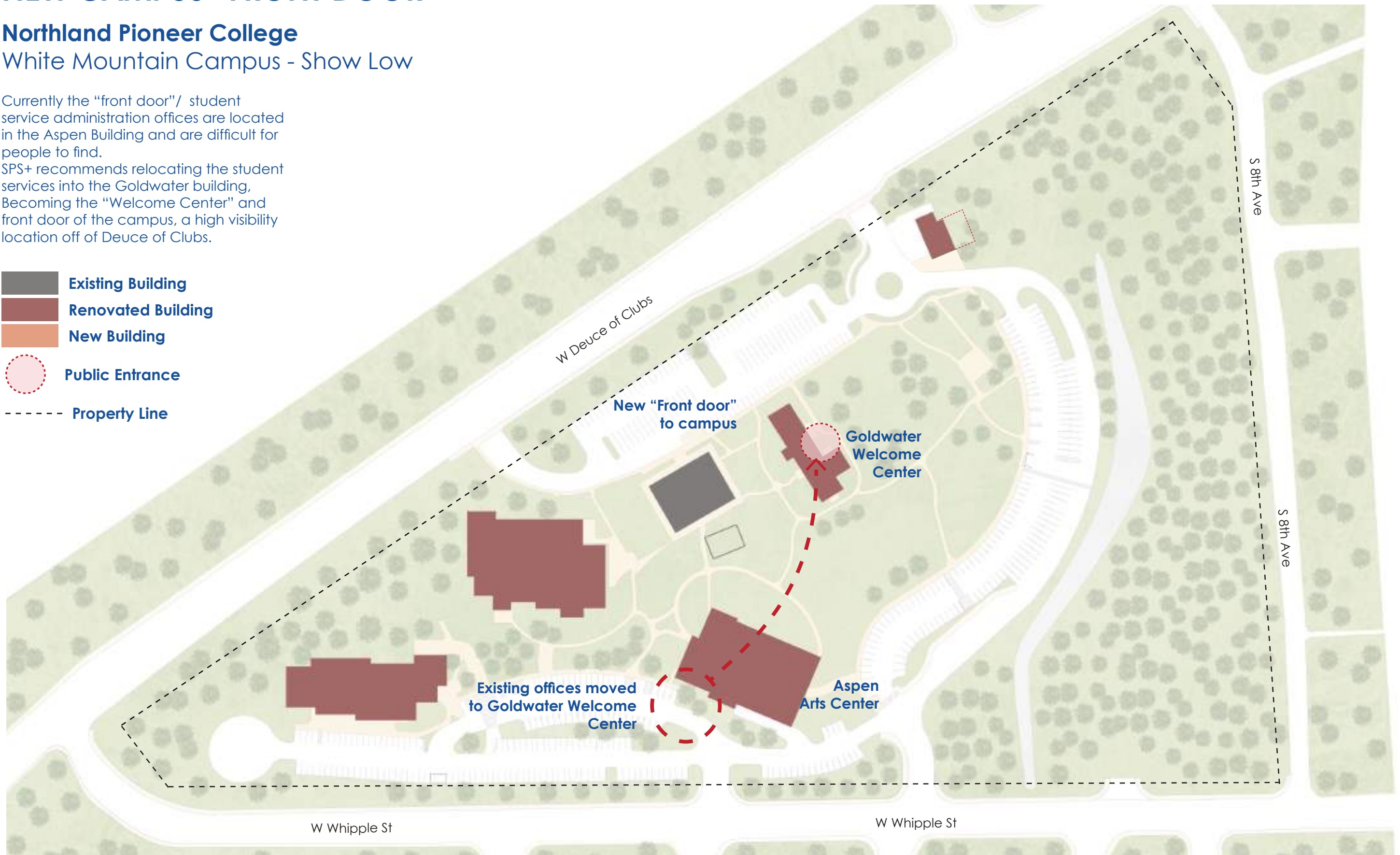
NEW CAMPUS "FRONT DOOR"

Northland Pioneer College

White Mountain Campus - Show Low

Currently the "front door"/ student service administration offices are located in the Aspen Building and are difficult for people to find. SPS+ recommends relocating the student services into the Goldwater building, becoming the "Welcome Center" and front door of the campus, a high visibility location off of Deuce of Clubs.

-  Existing Building
-  Renovated Building
-  New Building
-  Public Entrance
-  Property Line

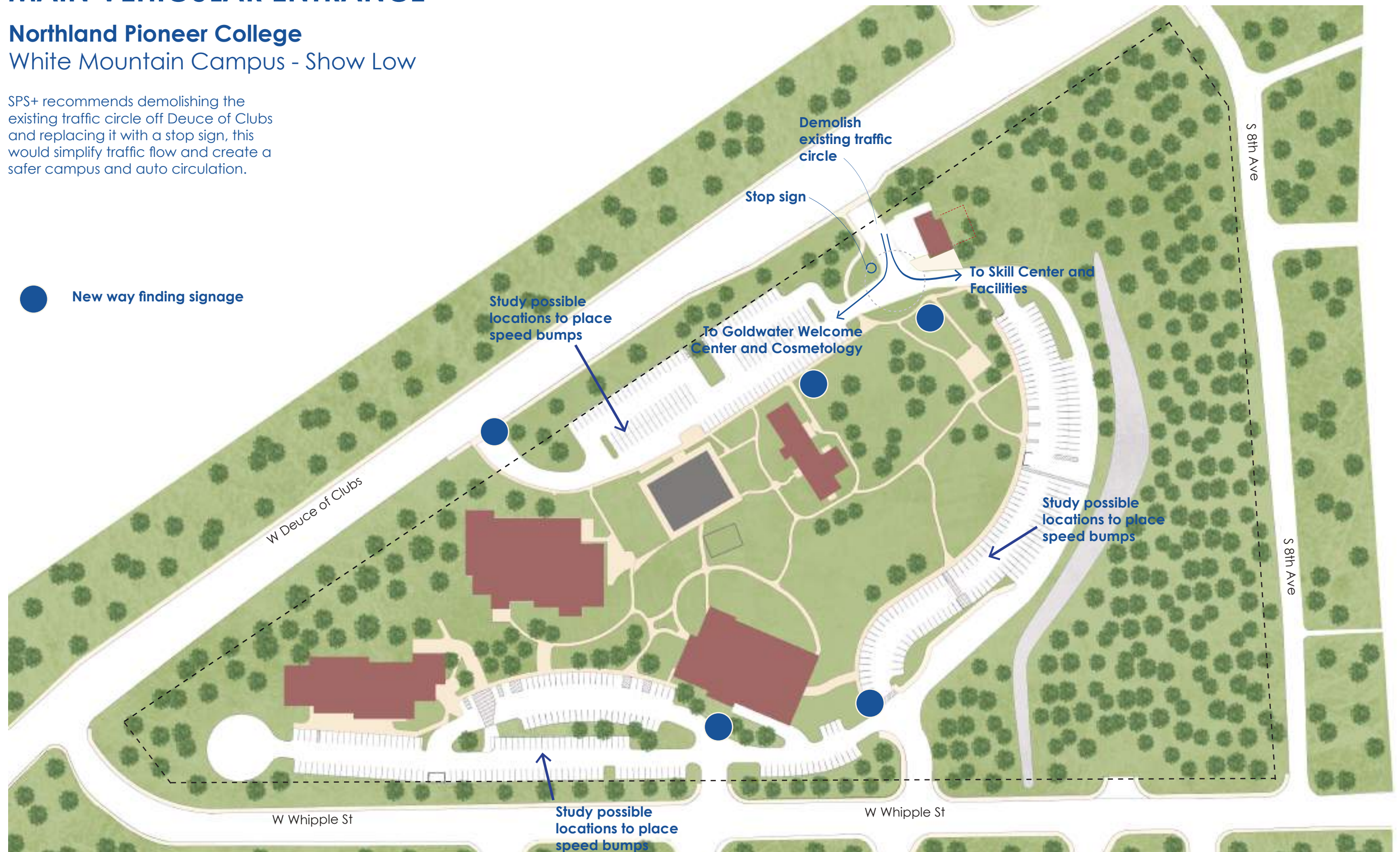


MAIN VEHICULAR ENTRANCE

Northland Pioneer College

White Mountain Campus - Show Low

SPS+ recommends demolishing the existing traffic circle off Deuce of Clubs and replacing it with a stop sign, this would simplify traffic flow and create a safer campus and auto circulation.



2020 EXPANSION PLAN

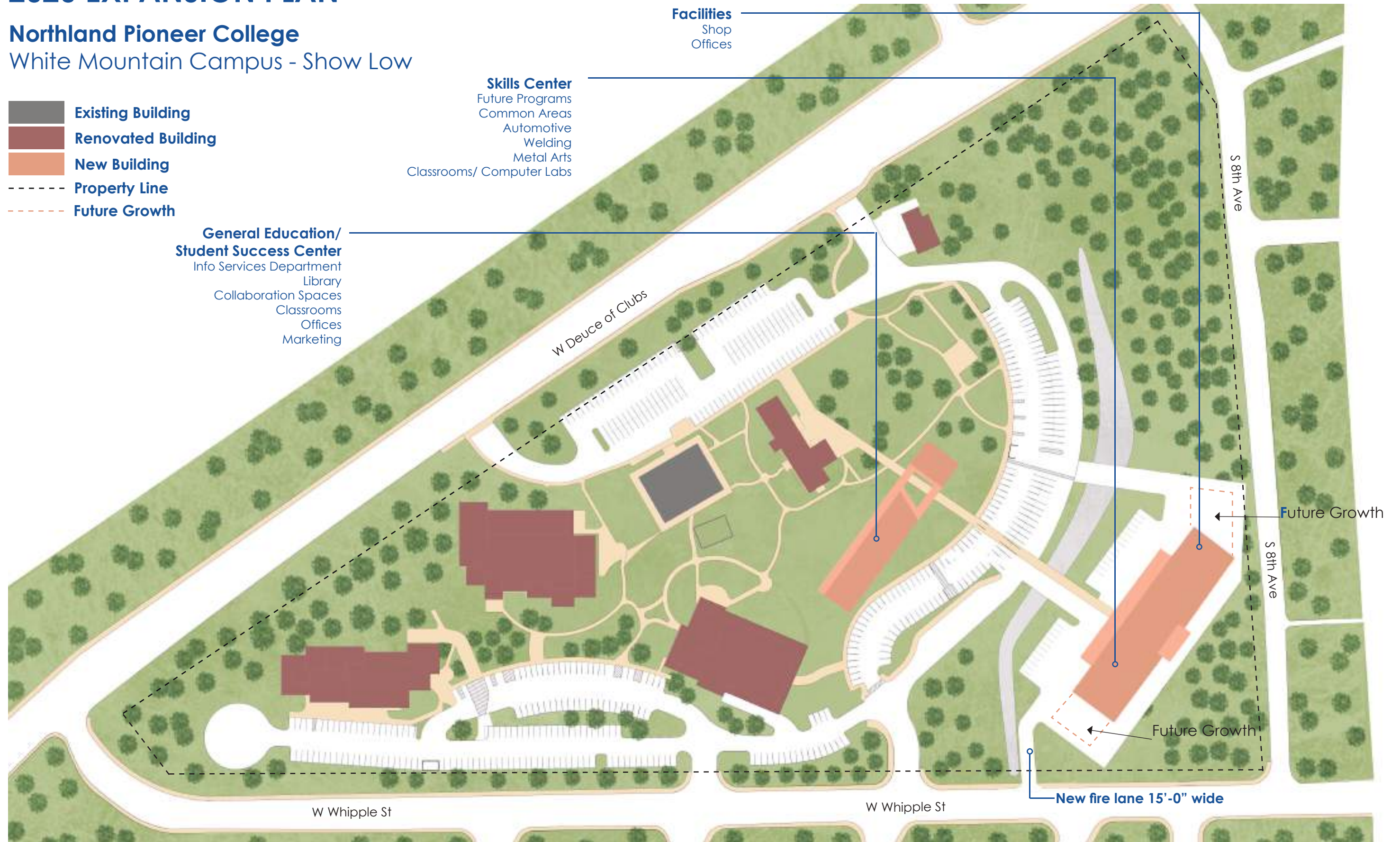
Northland Pioneer College White Mountain Campus - Show Low

- Existing Building
- Renovated Building
- New Building
- Property Line
- Future Growth

**General Education/
Student Success Center**
 Info Services Department
 Library
 Collaboration Spaces
 Classrooms
 Offices
 Marketing

Skills Center
 Future Programs
 Common Areas
 Automotive
 Welding
 Metal Arts
 Classrooms/ Computer Labs

Facilities
 Shop
 Offices

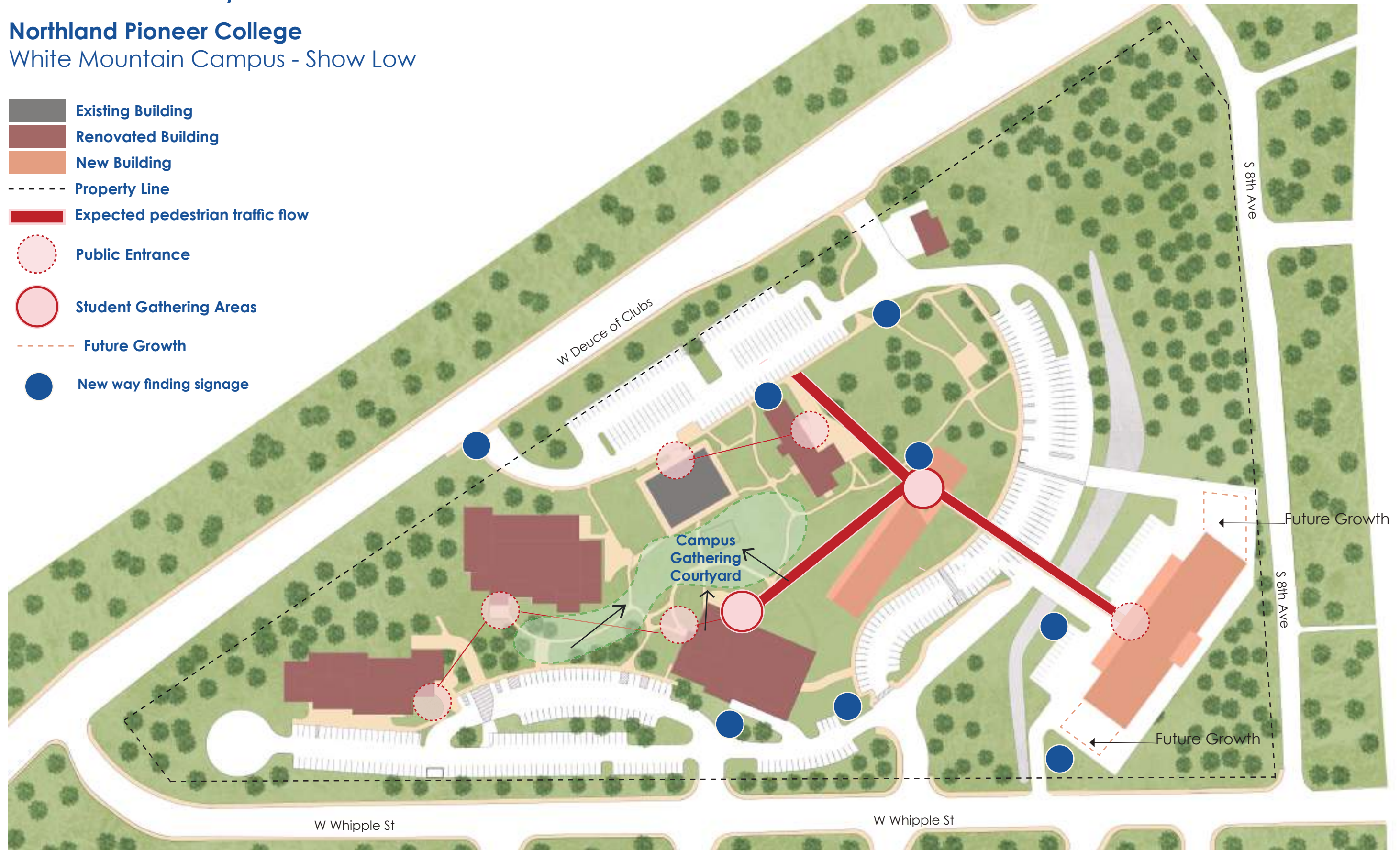


CONNECTIVITY/CAMPUS STUDENT LIFE DIAGRAM

Northland Pioneer College

White Mountain Campus - Show Low

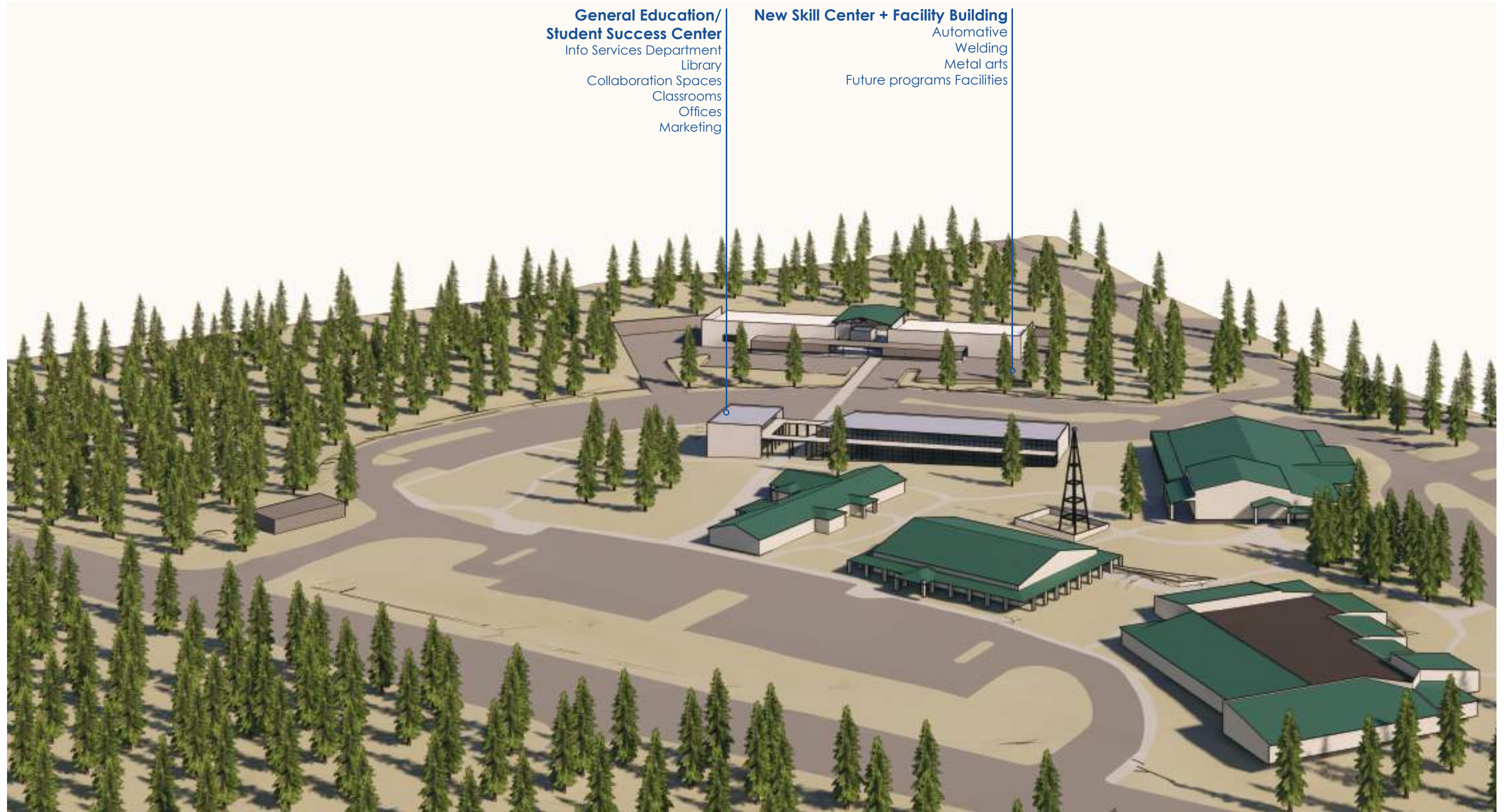
- Existing Building
- Renovated Building
- New Building
- Property Line
- Expected pedestrian traffic flow
- Public Entrance
- Student Gathering Areas
- Future Growth
- New way finding signage



2020 CONCEPT MASTER PLAN

Northland Pioneer College

White Mountain Campus - Show Low



PART #2

RENOVATIONS TO NORTHLAND PIONEER CAMPUSES AND CENTERS

- **Little Colorado Campus - Winslow**
- **Silver Creek Campus - Snowflake/Taylor**
- **Painted Desert Campus - Holbrook**
- **Whiteriver Center - Whiteriver**
- **Hopi Center - Polacca**

SPS+ ARCHITECTS RECOMMENDATIONS FOR LITTLE COLORADO CAMPUS - WINSLOW



Observations:

1. The Cosmetology Department has outgrown the portables and requires modernization and additional space.
2. The Allied Health Department is in demand and requires more space.
3. The Multipurpose building has underutilized space.

Opportunities:

1. Expand the parking lot near the Blunk Building.
2. Consolidate Student Services and make easy to find.
3. The Learning Center Symposium, 102 and 104 rooms tiered floors have limited functionality and flexibility. Consider a flat floor solution.
4. Plan for childcare (consider drainage, consider across drive from Ruby Hill)
 - a. Drop off, Pick up drives, classroom(s) support area and fenced play area.
5. There is building space between Blunk Building and Learning Center
6. There will be building space when the Cosmetology Department portable is removed.
7. Move the campus office closer to the front of campus in the Learning Center.

WINSLOW SITE PLAN

Northland Pioneer College

Little Colorado Campus - Winslow

● New Way Finding Sign

Opportunities:

1. Expand the parking lot near the Blunk Building.
2. Consolidate Student Services and make easy to find.
 - a. Drop off, Pick up drives, classroom(s) support area and fenced play area.
3. Plan for childcare (consider drainage, consider across drive from Ruby Hill)
 - a. Drop off, Pick up drives, classroom(s) support area and fenced play area.
4. Move the campus office closer to the front of campus in the Learning Center.



Relocate Student Lounge from Multipurpose Building to Library

Library

New Front Door of Campus/
One stop Student Services

Future New Bldg

Ruby Hill

Learning Center

Future Cosmetology Bldg

Blunk Bldg

Allied Health

Drop off and Pick up

Child Care

Playground

2 classrooms

Future Parking Expansion

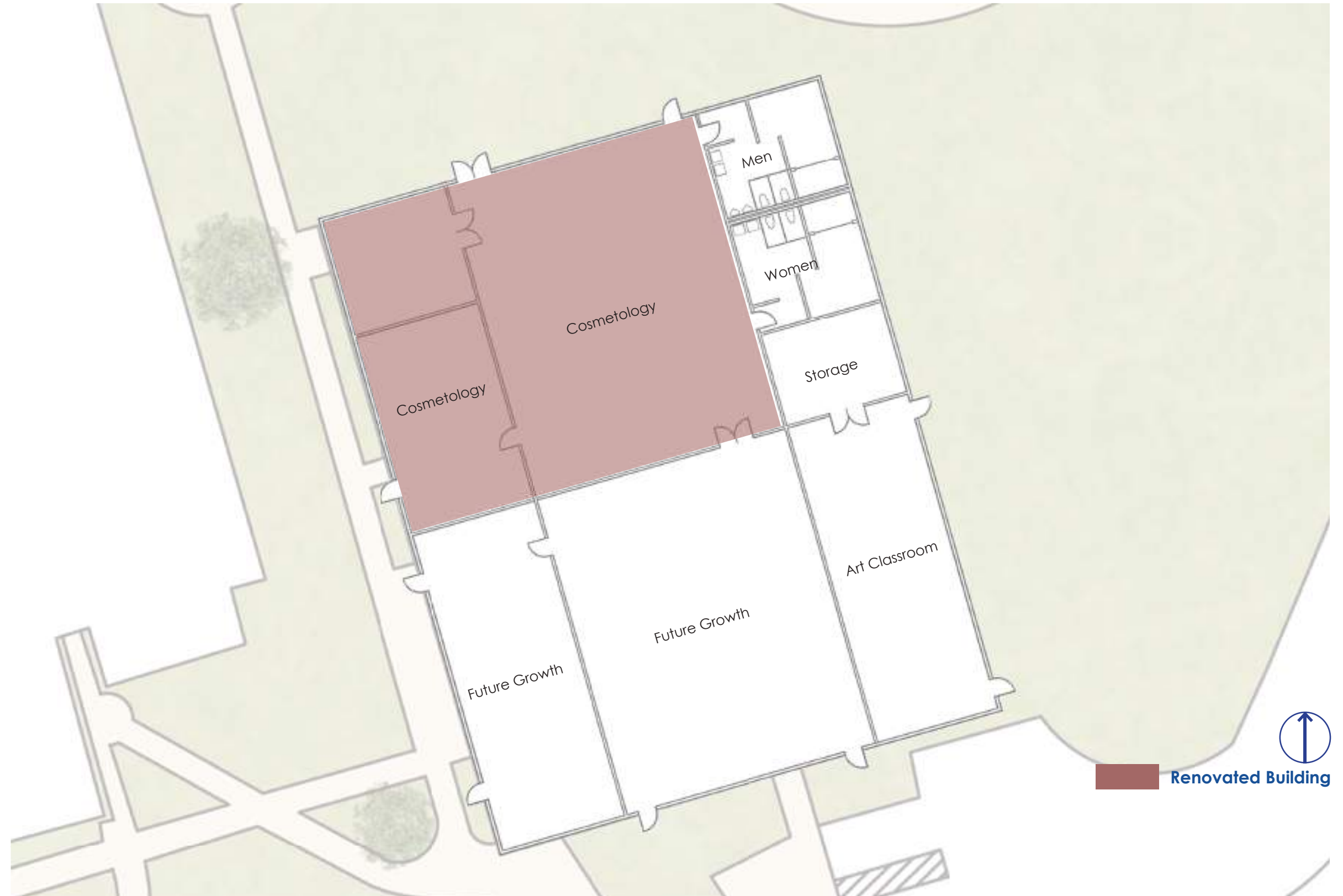
- Future Parking
- Existing Building
- Renovated Building
- New Building
- Future Opportunity



MULTIPURPOSE BUILDING PLAN

Northland Pioneer College

Little Colorado Campus - Winslow



BUNK HEALTH SCIENCES CENTER PLAN

Northland Pioneer College

Little Colorado Campus - Winslow



RUBY HILL BUILDING PLAN

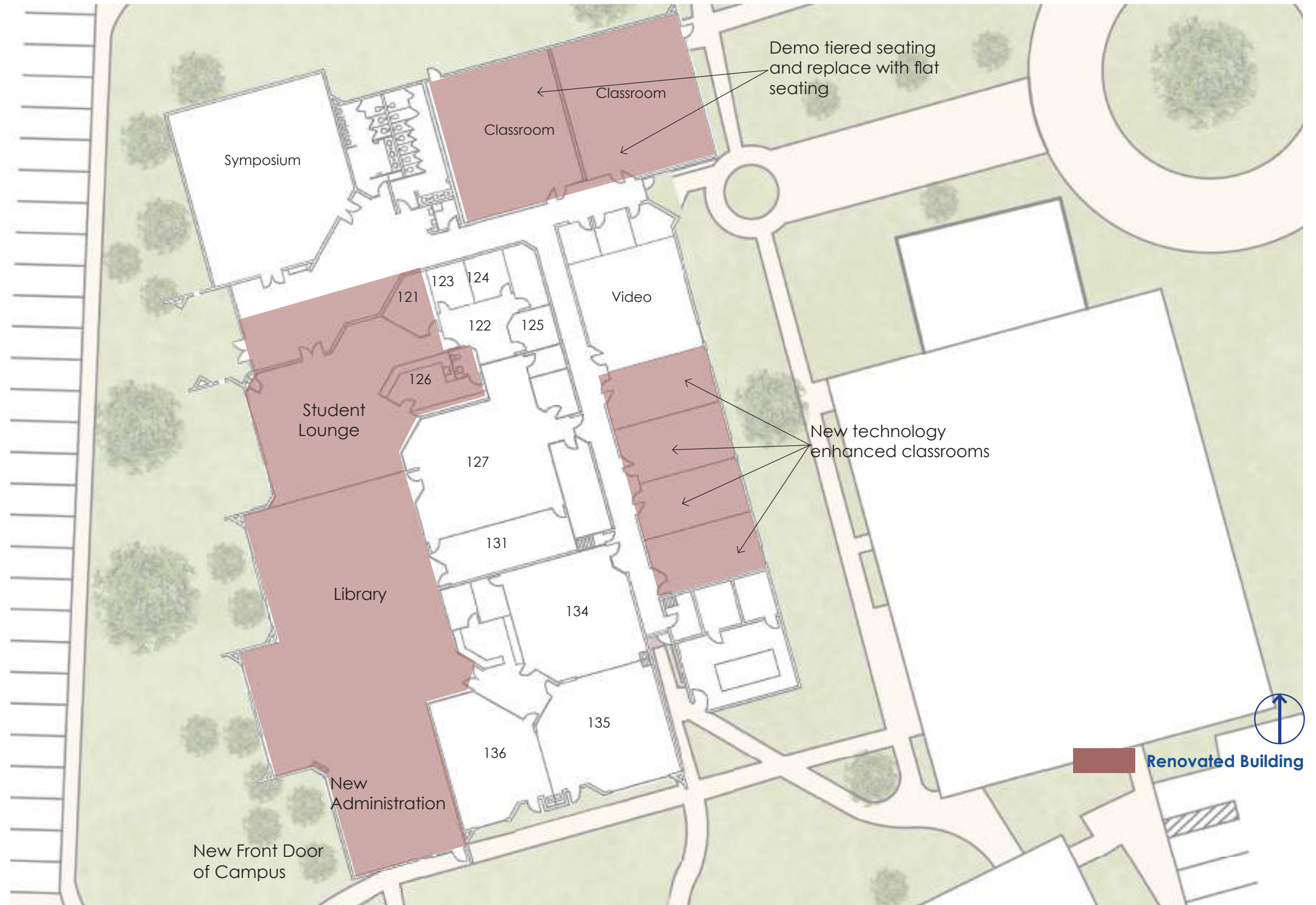
Northland Pioneer College

Little Colorado Campus - Winslow



LEARNING CENTER PLAN

Northland Pioneer College
Little Colorado Campus - Winslow



SPS+ ARCHITECTS RECOMMENDATIONS FOR SILVER CREEK CAMPUS - SNOWFLAKE/ TAYLOR



Observations:

1. There is ample learning space on campus.
2. Consolidate student services into Student Center to create a one stop shop for admissions.

Opportunities:

1. Utilize the Student Center science classroom.
2. Symposium, 102 and 104 tiered floors have limited functionality and flexibility, consider flat floor solution.
3. Plan for childcare (east side of rear parking lot)
 - a. Drop off, Pick up drives, classroom(s) support area and fenced play area.
4. Recognize senior center drive use.

SNOWFLAKE SITE PLAN

Northland Pioneer College

Silver Creek Campus - Snowflake/ Taylor

● New Way Finding Sign

Opportunities:

1. Utilize the Learning center science classroom.
2. Plan for childcare (east side of rear parking lot)
 - a. Drop off, Pick up drives, classroom(s) support area and fenced play area.



STUDENT CENTER PLAN

Northland Pioneer College

Silver Creek Campus - Snowflake/ Taylor



LEARNING CENTER PLAN

Northland Pioneer College

Silver Creek Campus - Snowflake/ Taylor



SPS+ ARCHITECTS RECOMMENDATIONS FOR PAINTED DESERT CAMPUS - HOLBROOK



Observations:

1. There is ample learning space on campus.
2. Provide additional parking east of Tawa to serve the skills center.

Opportunities:

1. Reorganize Tawa and Tiponi to be Districtwide administration offices. Locate all student services into Nizhoni to provide a one stop shop for admissions.
2. Provide visual and pedestrian connection between Nizhoni and Skills Center to encourage student connectivity.
3. Classroom reconfiguration to increase class capacity.
 - a. NCL 142 and 147: divide each to create four classrooms out of the existing two classrooms.
 - b. NCL 136 or 166 (Talon HS): combine the spaces and divide the existing classrooms to create three new classrooms.
4. The area East of the Skill center, in the area of the technology storage building remains unassigned.

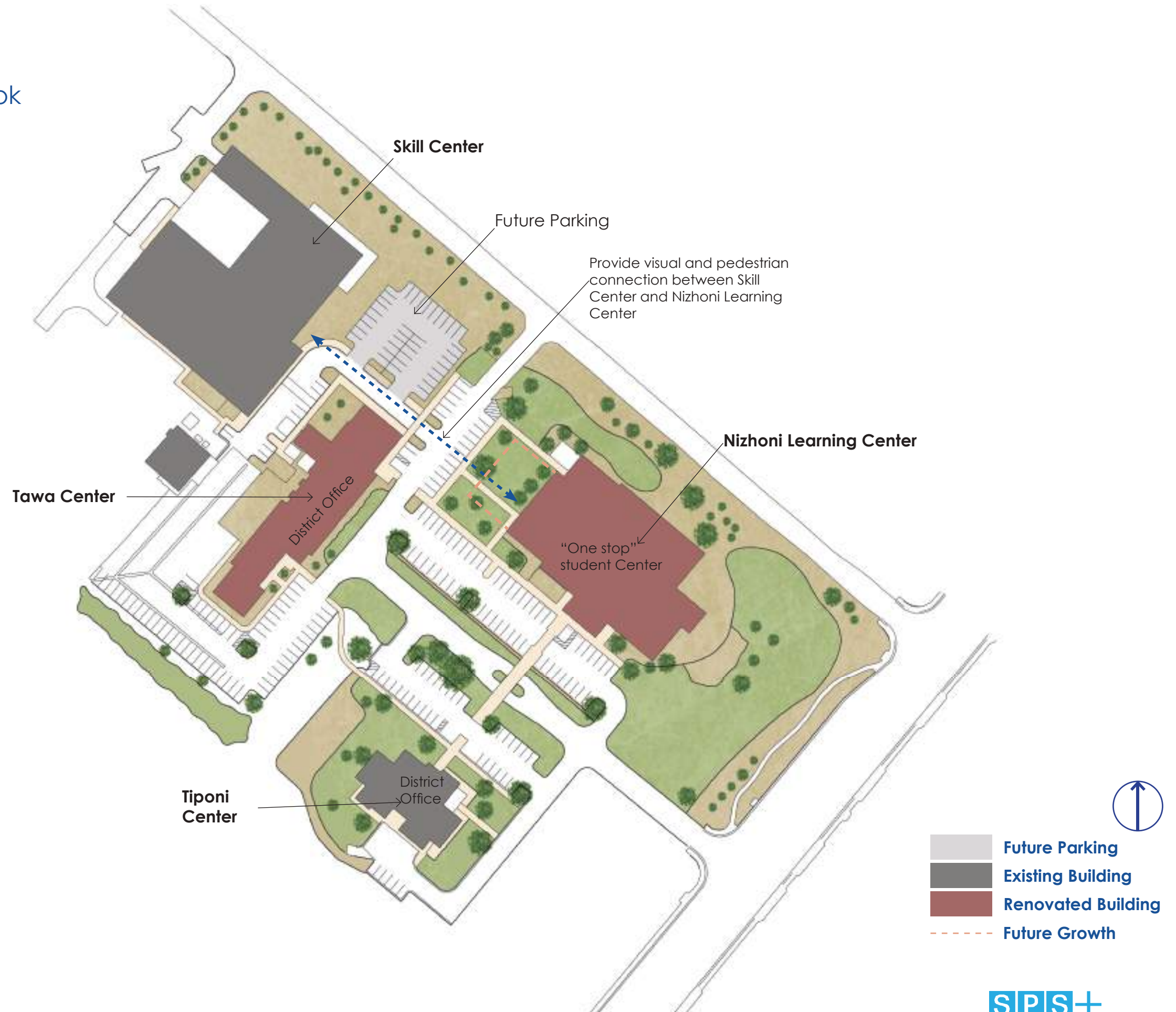
HOLBROOK SITE PLAN

Northland Pioneer College

Painted Desert Campus - Holbrook

Opportunities:

1. Reorganize Tawa and Tiponi to be Districtwide administration offices. Locate all student services into Nizhoni to provide a one stop shop for admissions.
2. Provide visual and pedestrian connection between Nizhoni and Skills Center to encourage student connectivity.



NIZHONI LEARNING CENTER PLAN

Northland Pioneer College

Painted Desert Campus - Holbrook



SPS+ ARCHITECTS RECOMMENDATIONS FOR WHITERIVER CENTER - WHITERIVER



Observations:

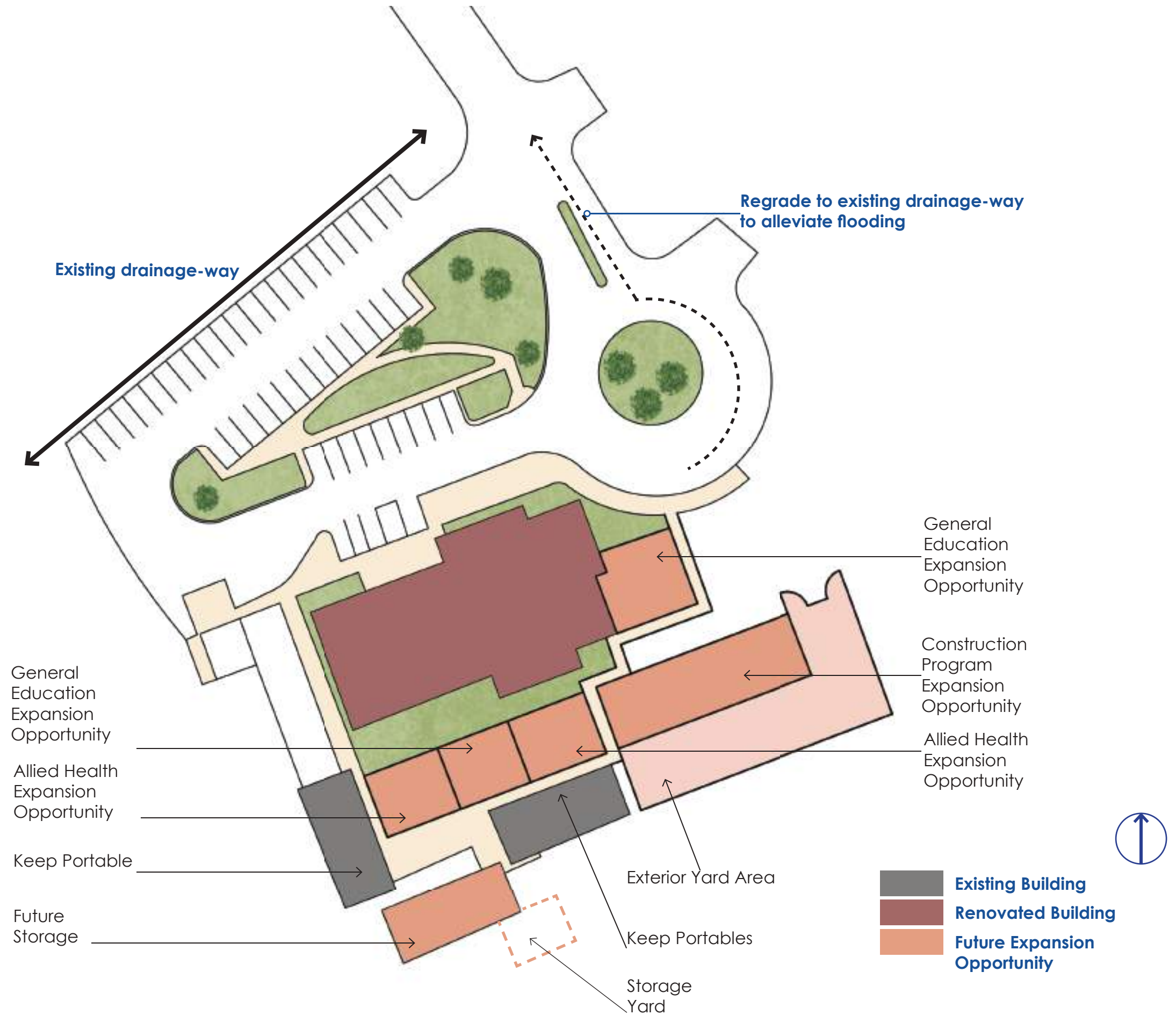
1. WRC has specific community needs such as internet access and computer resources.
2. Community has instituted a GED requirement for Tribal administration employment.

Opportunities:

1. Additional general education space is needed. Classrooms are at full use capacity.
2. The Construction Department is in a limited space portable. The department can benefit from a permanent building with a high ceiling and concrete floors.
3. The Allied Health Nursing Program is in a limited space portable. The program can benefit from a permanent building with ample space.
4. Plan for growth.

LEARNING CENTER PLAN

Northland Pioneer College
Whiteriver Center - Whiteriver



NPC CENTER PLAN

Northland Pioneer College
Whiteriver Center - Whiteriver



SPS+ ARCHITECTS RECOMMENDATIONS FOR

HOPI CENTER - POLACCA



Observations:

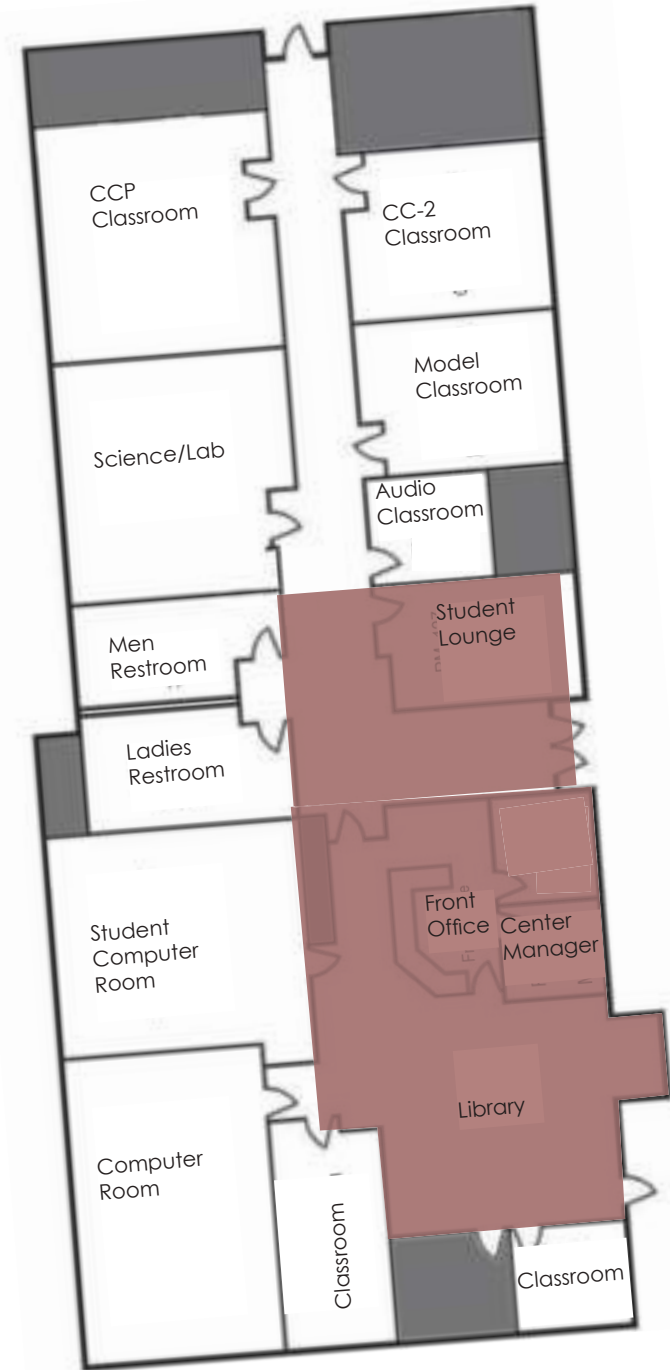
1. The Hopi community is unique with traditional learning and living values. Traditional learning techniques such as physical books and lecture classrooms are appreciated.
2. There are no consumer services nearby, therefore students often stay on site for the entire day. The Library and lounge spaces are in high demand.

Opportunities:

1. Internally review classroom and office uses. Relocate as appropriate.
2. Maximize existing space via furniture at library and lounge.
3. Provide on-going maintenance.

HOPI SITE PLAN

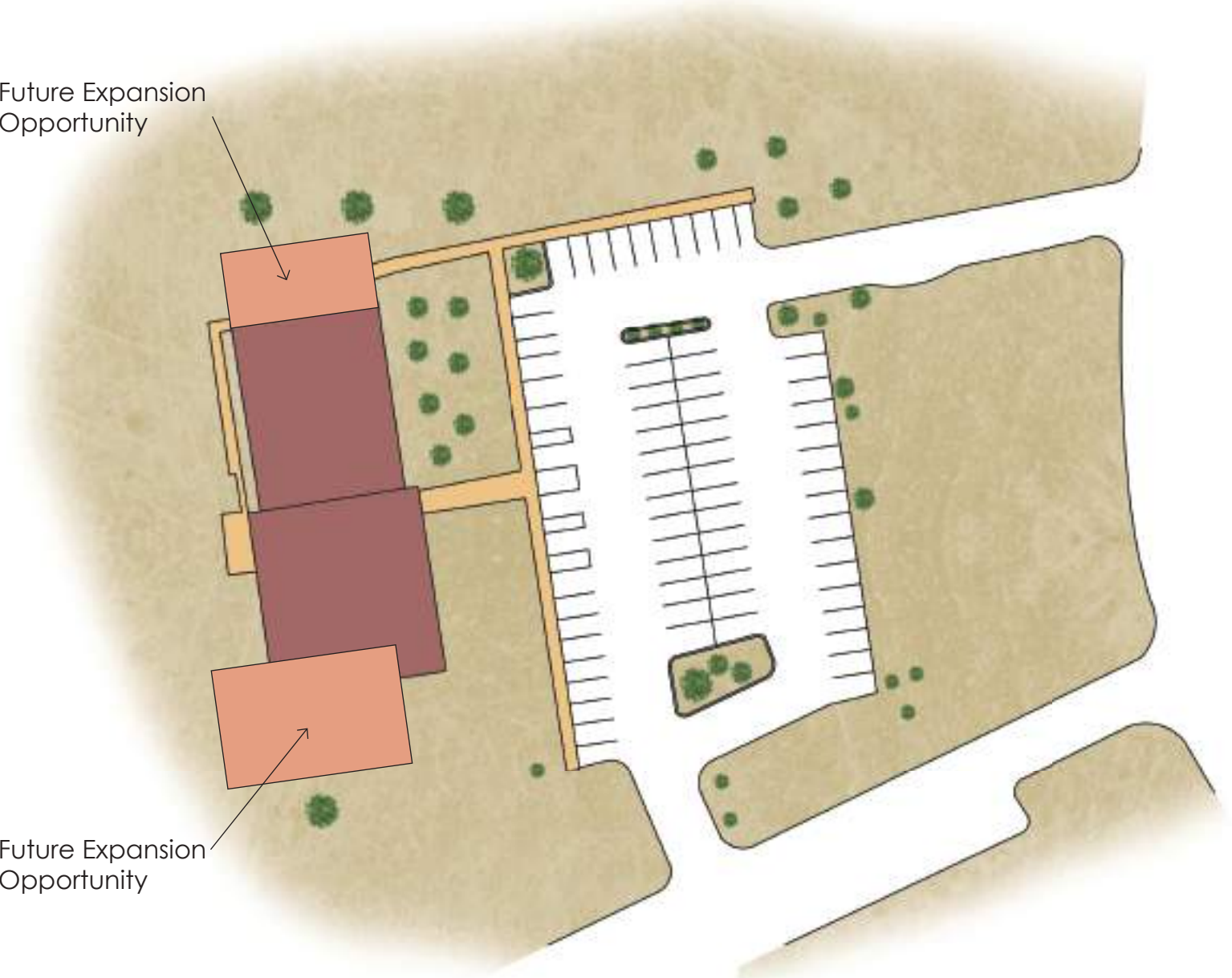
Northland Pioneer College
Hopi Center



Floor Plan

Future Expansion Opportunity

Future Expansion Opportunity



Site Plan

Renovated Building

Existing Support/Storage to Remain

Future Expansion Opportunity





TRANSFORM YOUR LIFE



OUR MISSION

“Northland Pioneer College provides, supports and promotes lifelong learning”